

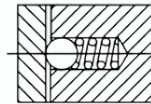
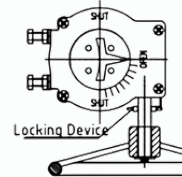
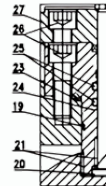
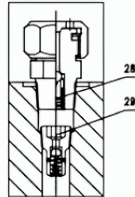
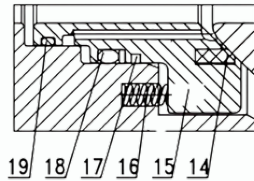
I SPE SEAT

A-A

II 3:1

P VIEW

Anti-Static Device



BILL OF MATERIALS

NO.	PARTS NAME	MATERIAL	NO.	PARTS NAME	MATERIAL
1	BODY STUD	ASTM A320 L7M+ZN	19	O-RING	VITON-GLT-AED
2	BODY NUT	ASTM A194 7M+ZN	20	STEM	17-4PH
3	BONNET	ASTM A350 LF2 CL.1	21	BEARING	C.S.+PTFE
4	GASKET	GRAPHITE+316S.S.	22	WASHER	PTFE
5	BODY O-RING	VITON-GLT-AED	23	GASKET	GRAPHITE
6	BOLT	ASTM A320 L7M+ZN	24	PACKING BOX	ASTM A350 LF2 CL.1
7	TRUNNION SHAFT	ASTM A350 LF2 CL.1	25	STEM O-RING	VITON-GLT-AED
8	BODY	ASTM A350 LF2 CL.1	26	BOLT	ASTM A320 L7M+ZN
9	BALL	ASTM A182 F51	27	TOP FLANGE	ASTM A350 LF2 CL.1
10	DRAIN	SS316	28	SEAT INJECTION	S.S.316
11	BEARING	C.S.+PTFE	29	CHECK VALVE	S.S.316
12	WASHER	PTFE	30	GEAR BOX	ASSEMBLY
13	SUPPORTING FEET	C.S	31	KEY	C.S
14	SEAT INSERT	DEVLON	32	ALIGNMENT PIN	C.S
15	SEAT SPRING	INCONEL X-750	33	ANTISTATIC DEVICE	S.S.316
16	SEAT RING	ASTM A182 F316	34	STEM INJECTION	S.S.316
17	SEAT FIRESAFE PACKING	CARBON FIBRE GRAPHITE	35	LIFTING LUGS	C.S
18	SEAT O-RING	VITON-GLT-AED	36	VENT	S.S.316

PERFORMANCE STANDARDS

NOMINAL CL (PN)	600LB	STANDARD
SHELL TEST PRESSURE	15.3 MPa / 2220 Psi	API 598 with API 6D (Test duration)
SEAL TEST PRESSURE	11.2 MPa / 1625 Psi	API 598
AIR TEST PRESSURE	0.6 MPa / 87 Psi	API 598 & ASME B16.34
TEMPERATURE RANGE	-46 to +140 °C	-50 to 284 °F
SUITABLE MEDIUM	WATER/OIL/NATURAL GAS ETC	
FUGITIVE EMISSIONS(FE) TESTING	ISO 15848-2	
JET FUEL COMPLIANCE	Suitable for Jet Fuel service	

DESIGN STANDARDS

PRESSURE RATING	ANSI Class 600	VALVE TYPE	TRUNNION MOUNTED
DESIGN	API 6D	FIRESAFE	API 607
FACE TO FACE DIMENSION	ASME B16.10, API-6D	TEST & INSPECTION	API 6D
END CONNECTION	ASME B16.5-RF, SF 3.2-6.3Ra	MARKING	MSS SP-25
ISO MOUNT	5211 TOP FLANGE	NACE	MR 01-75 (Internal Wetted parts)
CERTIFICATION	EN10204, Type 3.1	MIN BODY WALL THICKNESS	ASME B16.34
PAINT	SA 2.1/2 BLASTING, EPOXY PRIMER + POLYURETHANE TOP COAT, DFT 150µm, RAL 7035		

DESCRIPTION

200MM CLASS 600# TRUNNION BALL VALVE, A350 LF2 CL.1 / A105N FORGED BODY (DUAL CERT.), FULL PORT, 3-PIECE, DBB, F51 BALL, F316 SEAT RING, DEVLON V INSERT, 17-4 PH STEM, VITON AED SEALS, SS+GRAPHITE GASKET, INCONEL X-750 SPRINGS, A320 L7M BOLTS & A194 7M NUTS (HDG), 316 SS SEAT & STEM SEALANT INJECTION, VENT/DRAIN, API 6D DESIGN & TEST, API 607 FIRESAFE, ISO 5211 MOUNTING, LOCKABLE GEAR OPERATED, NACE MR-01-75 COMPLIANT

SIZE	A	B	C	D (MIN)	E	F	REF W	REF H	L	N-ØD	BREAK TORQUE NO SAFETY(NM)	PRODUCT CODE
8"-600LB	419	55.6	269.7	201	349.2	6.4	600	320	660	12-Ø32	2150	BFT3L60XADVRFNG6D200